

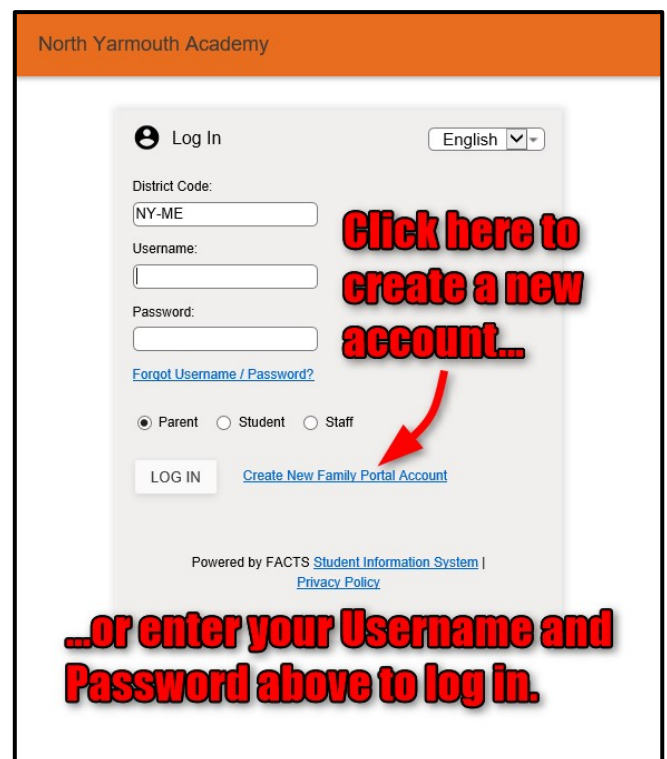
NYA Family Web – Using Family Web Help Sheet

This help sheet explains how to log into and look around at Family Web, the section of the NYA website where homework assignments, class information, directory information, calendars, lunch menus, and official school forms are available.

1. In your web browser, navigate to the NYA home page at www.nya.org, click “Parent” in the top menu and then click “Family Web” to login.



2. The login screen is shown at the right. If you have already created your account, enter your user name and password, click “Parent” and then “Log In” to enter Family Web. For first time logins, click on the link that says “Create New Family Portal Account”. Follow the directions, or for additional assistance, see the Create New Parent Account Help Sheet on the Parent Technology Help webpage.



Features of Family Web

When you arrive at the NYA Family Web page, you will be greeted with information in three columns: recent announcements, events scheduled for today/tomorrow, and the daily school calendar. Family Web features three areas of information listed in the sidebar on the left side of your browser.

- **School Information** – includes the home screen, the NYA events calendar, a student directory sortable by various groups, and electronic school information forms
- **Student Information** – includes the student’s schedule, homework assignments, class information, and the lunch menu
- **Family Information** – includes submitted contact information for family members and the change username and password options

IMPORTANT NOTE: Parents can choose what information they share publicly in the student directory. Please select the “School Information” category on the left, and then select “Web Forms”. In the list that appears at the right, select “Custodial Parent Information”. See the example below.

Use this form to add or change your individual contact information. Please note that there may be a delay of one business day for changes to take effect. By default, the NYA directory will include:

- Parent(s) name
- Household address
- Home phone
- Parent email
- Parent cell phone

Features are listed on the left. Click to open a screen on the right.

NYA FAMILY WEB

Welcome Back
David Gagne [Logout](#)

School Information

- School Home
- Calendar
- Directory
- Web Forms

Student Information

Family Information

Get the RenWeb Home App
Available on the App Store | Get it on Google play
Learn More about the RenWeb Home app for accessing ParentsWeb information via the convenience of an app!

Custodial Parent Information

Occupation

Company

Work Phone

Work Street

Work City

Work State

Work Zip

Directory: Block Name Yes No

Directory: Block Address Yes No

Directory: Block Home Phone Yes No

Directory: Block Email Yes No

Directory: Block Cell Phone Yes No

In "School Information/Web Forms/Custodial Parent Info", scroll to the bottom to choose which information is shared publicly in this online directory.

Be sure to Save.